

OVERHEAD LINE FITTINGS (U.K.) LIMITED



EDITION A08



WOOD LANE WORKS, NORTON-JUXTA-TWYCROSS, ATHERSTONE,
WARWICKSHIRE. CV9 3QB





OVERHEAD LINE FITTINGS (U.K.) LIMITED

INSULATOR FITTINGS

Section B



BALL ENDED FITTINGS



SOCKET ENDED FITTINGS



SHACKLES



YOKE PLATES



SAG ADJUSTER SETS
AND MAINTENANCE LINKS



LINKS AND PLATES



ARCING HORNS, CORONA
SHIELDS AND RINGS



MISCELLANEOUS



INSULATOR FITTINGS

*Overhead
Line Fittings (UK)
Limited offers a
comprehensive range of
insulator fittings to suit all types
of line constructions and voltages
ranging from distribution up to
500kV and above.*



Insulator Fittings

*Standard fittings to BS 3288 Part 2 are embraced
within the available range together with the newer
and more specialised items now required
(particularly in the UK) for Twin, Triple and Quad
conductor configurations using the larger AAC
conductors (Araucaria and Redwood).*

*Fittings with ball and socket couplings are in
accordance with BS 3288 Part 3 and BS EN 60120
with, where appropriate, locking devices in
accordance with BS 3288 Part 4 and BS EN 60372.*

*Ball and socket and clevis and tongue fittings
to other National/International Standards such
as ANSI can similarly be provided upon
receipt of detailed enquiry.*





INSULATOR FITTINGS



Arc horns and corona rings for all voltages and applications are available from the comparatively basic 12mm. and 16mm. rod type through to the complex tubular designs as used on 400kV sets. All arc horns are (Sample and Routine) mechanically tested as appropriate.

A range of miscellaneous fittings used in a variety of applications is available including turnbuckles, eye bolts, dropper plates and many other specialised items.

Corrosion Protection

All ferrous fittings, with the exception of those manufactured in stainless steel, are hot dip galvanised to BS EN ISO 1461.

Testing

All insulator fittings are subjected to Type, Sample and Routine tests as applicable to the appropriate specification. In house mechanical test facilities using specialised calibrated and certified equipment allowing for tensile testing up to 500kN.





INSULATOR FITTINGS



A range of ball ended fittings is available encompassing ball hooks, ball eye links, ball clevis and ball tongues. Ball and shank sizes range from 11mm. up to and including 28mm. with failing loads of between 20kN and 400kN.

Sockets are available with either the 'W' shaped locking device or the split pin type locking device- all in accordance with BS 3288-4 and BS EN 60372.



INSULATOR FITTINGS



Socket ended fittings include socket tongues and socket clevis types with socket sizes ranging from 16mm. up to and including 28mm. with failing loads of between 70kN and 400kN.

Sockets are available with either the 'W' shaped locking device or the split pin type locking device- all in accordance with BS 3288-4 and BS EN 60372.



INSULATOR FITTINGS

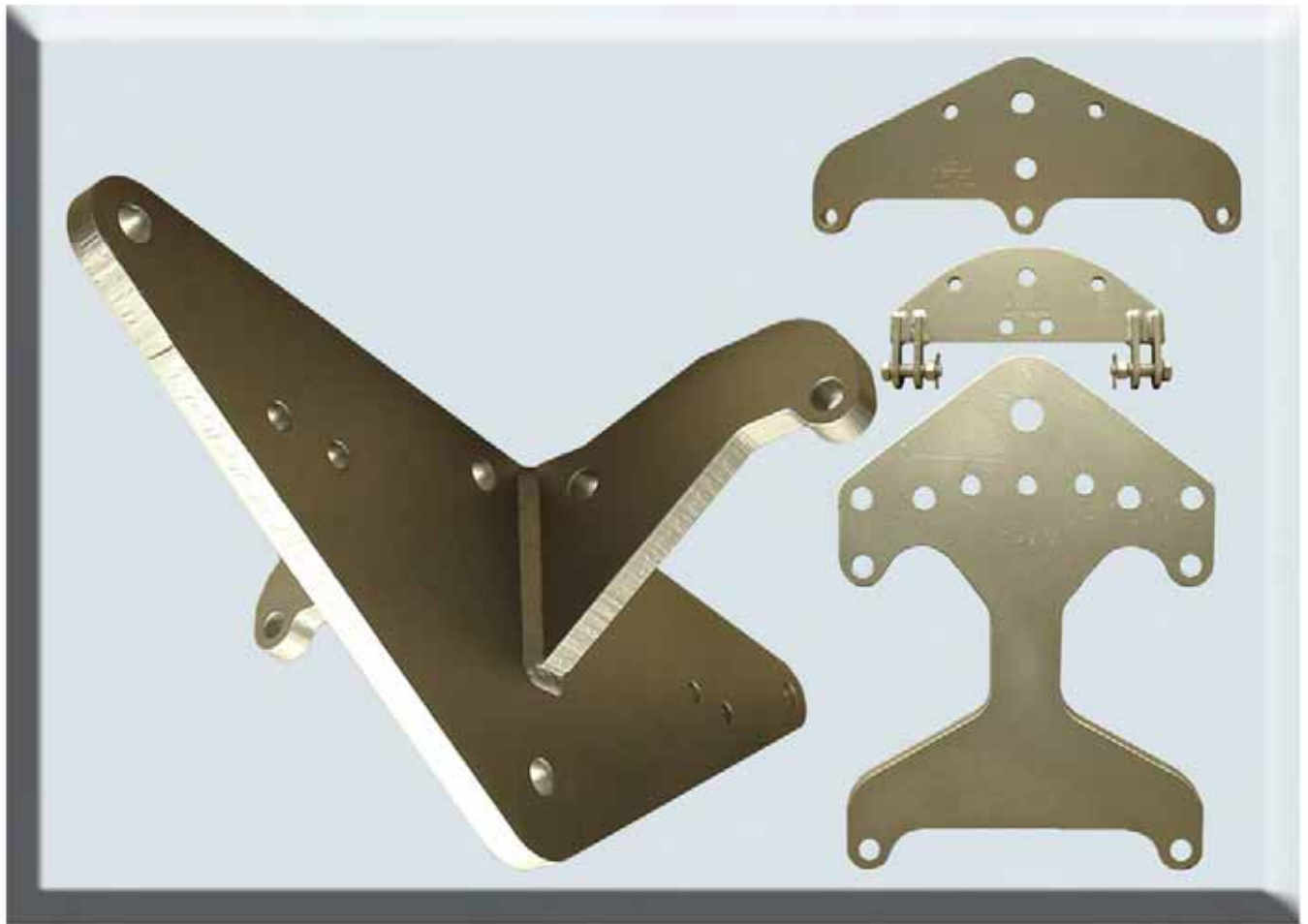


A comprehensive range of traditional round and square section shackles is available with failing loads of between 70kN and 300kN.

More specialised shackles for tower connection can also be provided upon receipt of full technical requirements.



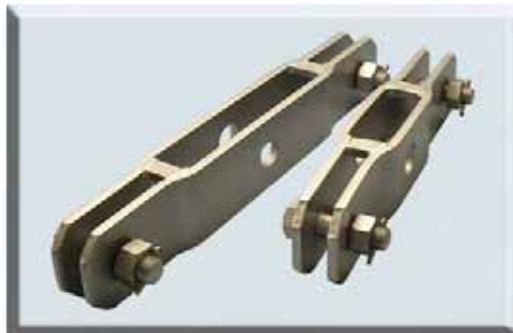
INSULATOR FITTINGS



Yoke plates for all types of constructions and conductor configurations are available. These range from the simplistic 15/22 design rated at 70kN to the more complex designs for triple insulator strings and quad conductors rated at 800kN.



INSULATOR FITTINGS



Conventional 400kN, 300kN, 190kN and 125kN Sag Adjuster Sets, Plates and Maintenance Links required to provide adjustment to insulator/conductor sags and the necessary interface between the tension set, tower and maintenance equipment are contained within the range of fittings available from Overhead Line Fittings (UK) Limited.

The majority of types and designs available are based on current UK maintenance procedures and practices. However, non standard designs can similarly be provided on receipt of full technical details.



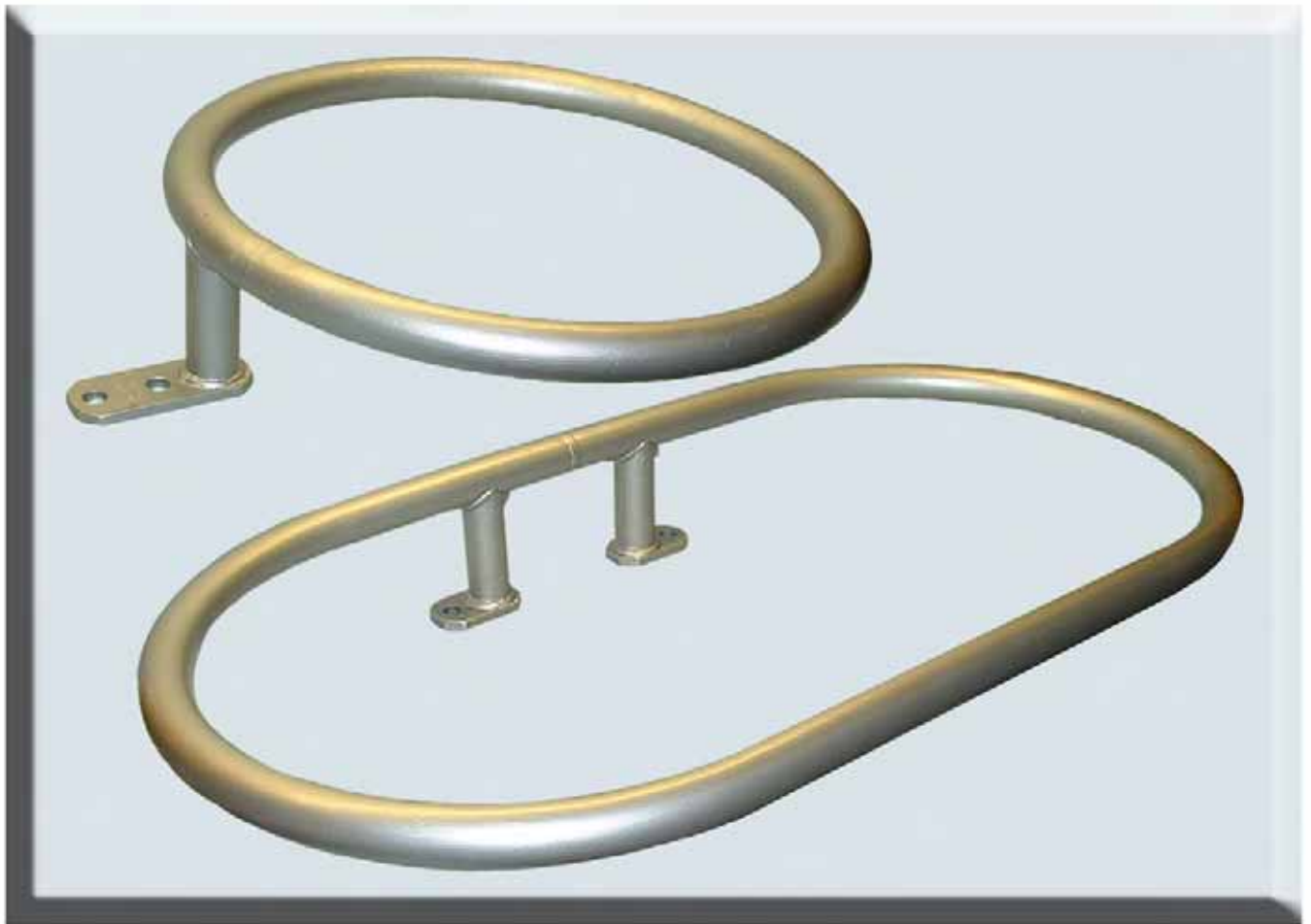
INSULATOR FITTINGS



A variety of steel plates and link arrangements including landing plates, single straight links, cranked link assemblies, parallel link assemblies, and crossarm link assemblies are available. Where special link arrangements are required, our engineering staff will be pleased to advise on all aspects of design and testing.



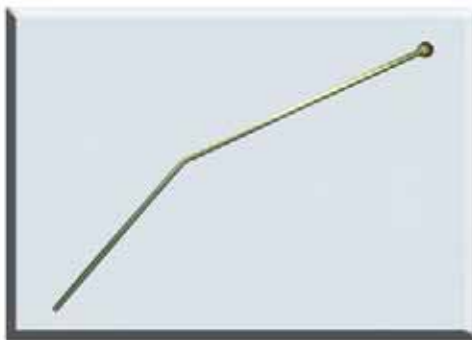
INSULATOR FITTINGS



Corona shields and rings for all transmission applications are available together with corona rings for use on 275kV/400kV sub station post insulators.



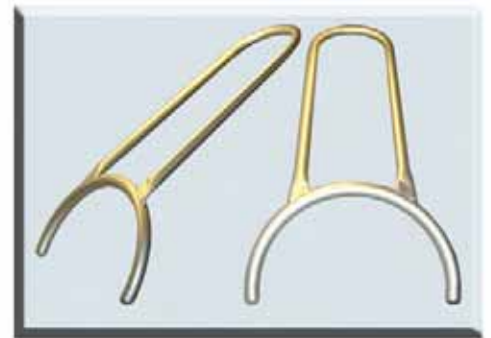
INSULATOR FITTINGS



The arc horns shown above are typical designs for use on voltages up to and including 132kV.



INSULATOR FITTINGS



The arc horns illustrated here are typical tube type suitable for voltages up to and including 400kV.



INSULATOR FITTINGS



Overhead Line Fittings (UK) Limited provide a range of miscellaneous fittings which are used in a variety of applications. These include turnbuckles, eye bolts, dropper plates, tower swivels, anchor attachments and many other specialised items.